



Share your pressing integration challenges with us!

Get in touch.

Our hybrid integration experts are happy to help:

+44 203 983 9860 | info@mach.health | mach.health

BUILD YOUR HYBRID

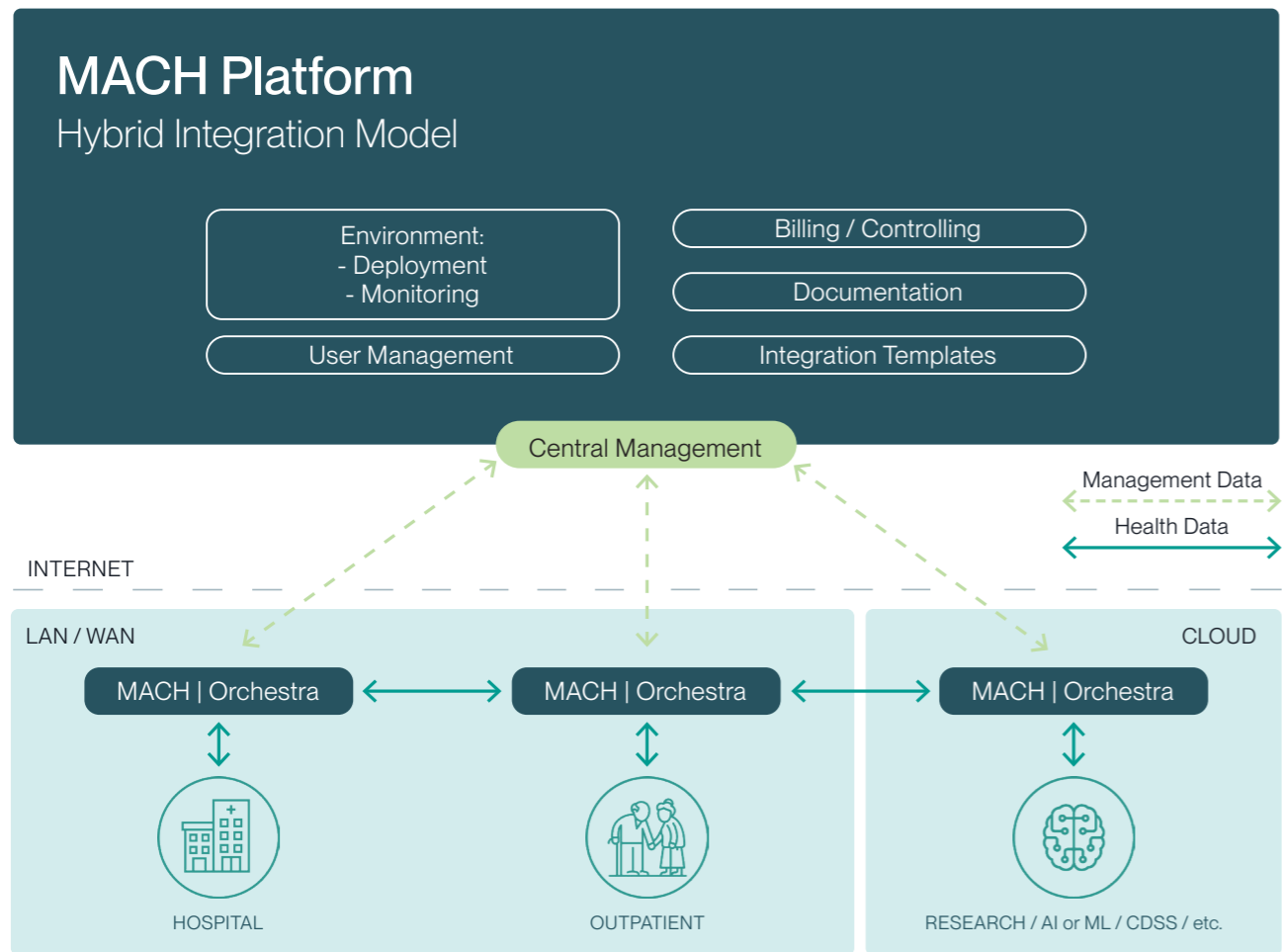
HEALTHCARE INTEGRATION



MEDICAL APPLICATION CONNECTION HUB – MACH

MACH is a secure, open standards-based platform for quick and simple deployment of on-premises and cloud-native integration services. MACH seeks to address every use case for partners facing integration challenges, and can be used standalone or fully embedded; as a classical integration engine connecting on-premise applications and systems, or helping to bridge local edge systems with cloud-hosted applications.

MACH provides a secure, reliable and compliant platform for sharing health data between medical applications.



Architecture

Are you a clinical application vendor or an integration services provider who wants to scale globally? We provide everything you need from a single source, whether you want to connect one hospital or a thousand. MACH allows you to manage instances centrally, making it highly scalable. It is API-driven and prioritizes data protection by design and default.

The MACH | Orchestra integration engine on which MACH is built provides industry standards-based message transformation tools for all flavors of HL7 (v2 and v3), FHIR¹, and supporting standards such as ASTM, XDT, EDIFACT, CDA, CCD, CCDA and DICOM. MACH also supports device integrations² and all widely used communication technologies, such as MLLP, TCP/IP, JDBC, SOAP, REST, DICOM Worklist, and TLS certificate-based exchange. The built-in DICOM routing features offer DICOMweb and DIMSE, MPPS, plus change and (semi-automated) anonymization functions, which can be implemented as pre- and post-processing steps facilitated by MACH. MACH also offers a hybrid configuration: if required, you can customize the centrally managed cloud platform by connecting to an on-premise instance.

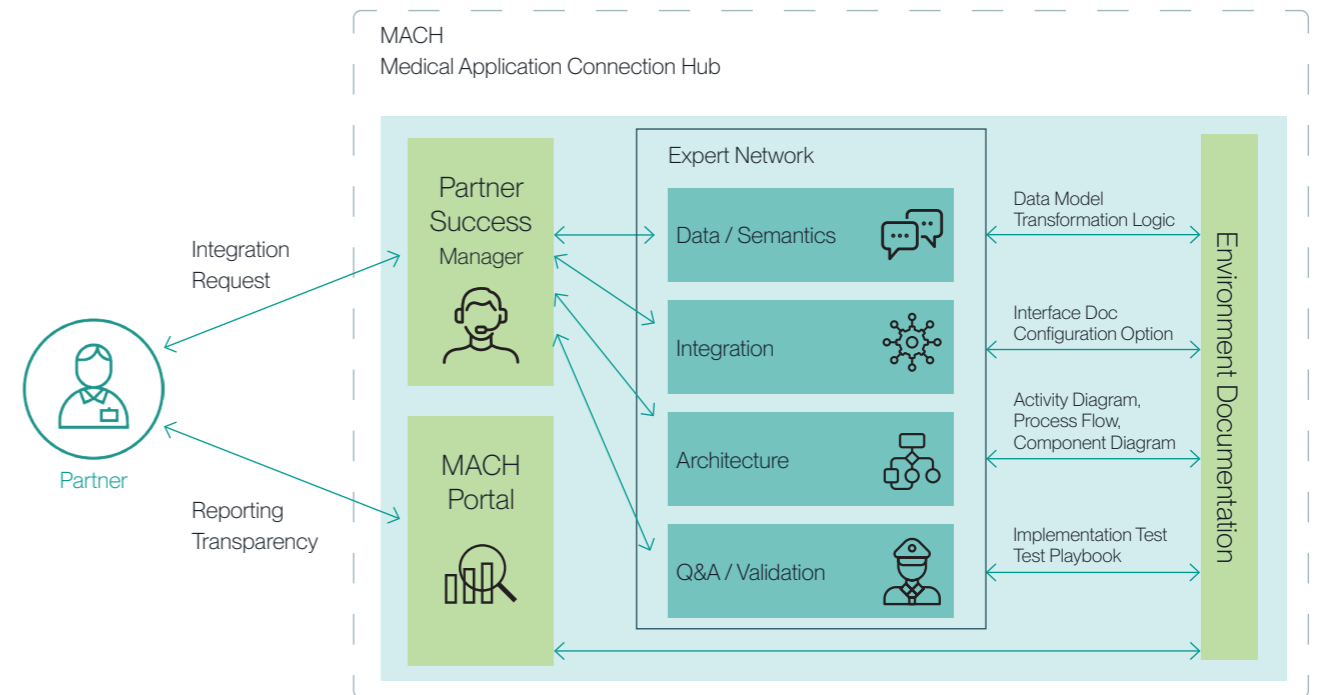
How you manage and monitor data flows is the determining factor in how effective a data integration platform is. On the MACH | Portal, monitoring is possible from a cluster perspective all the way down to individual instances, allowing for high-level status investigation as well as in-depth scenario exploration.

As an experienced integration partner, x-tention is also happy to provide services that help our partners place their clinical solutions on the market more quickly. We offer 24/7 support in German and English and can monitor your integration landscape proactively.



Learn more!

Global Health Data Integration



Service Model

¹ HL7, FHIR and the HL7 FHIR Logo are registered trademarks belonging to Health Level Seven International

² Native device integration requires a hardware dongle from the vendor to transform serial inbound stream